



Affordable Senior Living

Creekside Commons

KALISPELL, MONTANA

Unit Mix:

- 25: 1 Bedroom – 603 sq ft
- 6: 2 Bedroom – 782 sq ft

Monthly Rental Rates:

- 1 Bedroom - \$595 - \$890
- 2 Bedroom - \$715 - \$1,070
- Rent includes all utilities!

Household Income Range:

- 1 Person - \$22,240 - \$33,360
- 2 Person - \$25,440 - \$38,160

Unit Amenities:

- Frost Free Refrigerator
- Range – Stove/Oven
- Dishwasher
- In Sink Disposal
- Microwave
- Washer & Dryer in Unit
- Air Conditioning
- Large Closets
- Blinds
- Bedroom and Living Ceiling Fan
- Neutral Paint Colors
- Hardwood Cabinets

Building Amenities

- Manager's Office
- Community Room
- Patio
- Elevator
- Secure Entry

Location Map on Reverse

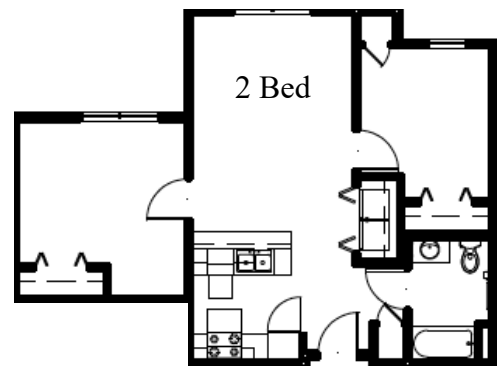
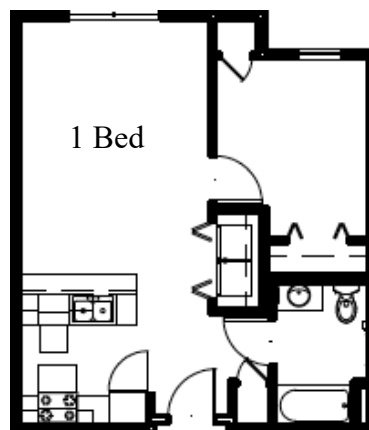
Creekside Commons is designed with convenience, community and safety for today's senior citizens; all at an affordable price. Our age 55 and older residents will find shopping, dining, entertainment, recreation and other amenities are easily accessible by foot, public transportation or private car.

Located on Glenwood Drive, just north of the Gateway Community Center and south of the Apartments @ 2 Mile, Creekside Commons will offer 31 one- and two-bedroom apartment homes. The large community room and patio can be enjoyed with both old and new friends.

In addition to all the essential appliances, each apartment home will include a washer/dryer, the convenience of an elevator and the security of a controlled entry building.

Construction is expected to begin spring of 2023.

Floor Plans:



Would you like further information?

For further information please reach out to us at 406-203-1558 or feel free to e-mail tyler@housing-solutions.org.



Affordable Senior
Living

Creekside Commons

KALISPELL, MONTANA



Housing Solutions, LLC
P: 406-203-1558 | www.housing-solutions.org

